

# LED DRIVERS

## **CONTENTS**

Product Overview.....	5-1
Model Number Breakdown.....	5-2

## **BALLAST SPECIFICATIONS**

Constant Voltage.....	5-3
Constant Current.....	5-4



## PRODUCT OVERVIEW

### Your Premier Lighting Ballast Solution

Ultrasave's offers an extensive line of constant current LED Drivers and drivers for 12V/24V LED systems. These ballasts are UL Class 2 rated, and operate at safe, low DC voltage and current levels to reduce hazards. Fully potted and ideal for damp locations, the unique electronic circuitry allows for exceptional performance in extreme low temperature of -40°C. The compact and lightweight sizes make our LED drivers ideal for a broad range of indoor and outdoor applications.

### Product Profile & Design Highlights

#### LED DRIVERS

- Constant current LED drivers and drivers for 12V/24V LED systems
- Operate at low DC voltage and current levels for safe operation
- Extreme low temperature performance of -40°C
- Multiple input voltage
- Low THD, high power factor
- 90°C case temperature rating
- Protection includes open/short circuit, overload, and overheating
- Lightweight and compact size
- Ideal for indoor and outdoor applications



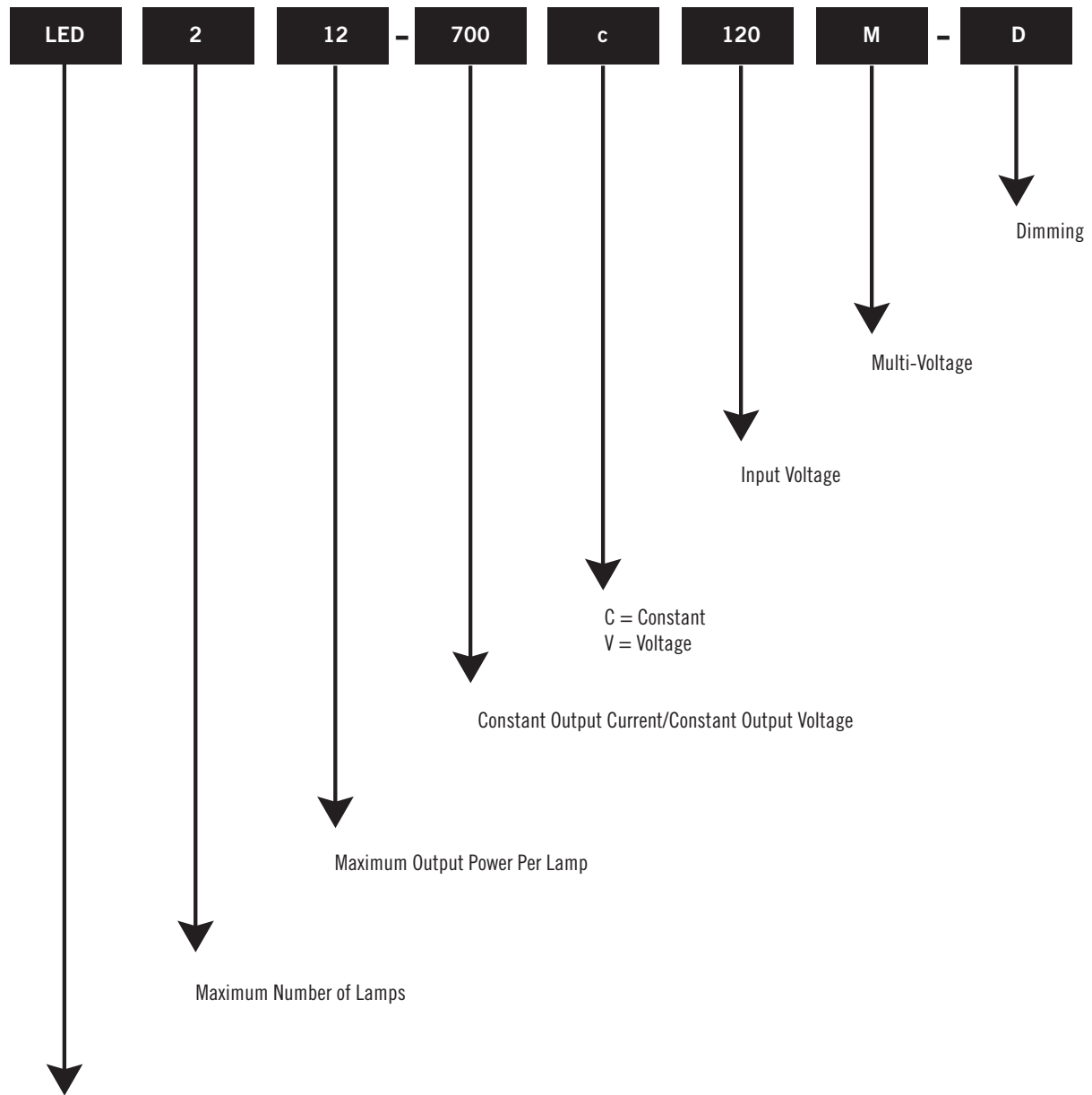
#### APPLICATIONS

- Street and Traffic Lights
- Advertising Displays and Signs
- Boats, Yachts and RVs
- Corridors

#### CERTIFICATIONS

- cULus Listed (Class 2 Outdoor)
- Complies with ANSI Standards
- Meets FCC Part 18 Class A for EMI
- RoHS Compliant

# MODEL NUMBER BREAKDOWN



LED = Light Emitting Diode  
LEDL = Light Emitting Diode, Low Power Factor

## Constant Voltage LED Drivers

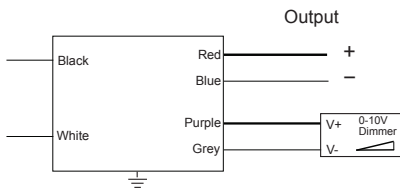
OUTPUT POWER (W)	OUTPUT VOLTAGE (V)	OUTPUT CURRENT (mA)	AMBIENT TEMP. (°F/°C)		INPUT VOLTAGE	MODEL NUMBER	INPUT CURRENT (A)	INPUT POWER (W)	MAX. THD (%)	MIN. POWER FACTOR	DIM.	WIRING DIAG.									
			CONSTANT	MAX.									MIN.	MAX.	MAX.						
<b>12VDC LED SYSTEMS</b>																					
25	12	2.08	194 / 90	-40 / -40	120 TO 277V	LED25-12V120M	0.27	31	10	0.95	5	2									
60	12	5.00				LED60-12V120M	0.61	72	10	0.95	5	2									
<b>24VDC LED SYSTEMS</b>																					
12	24	0.50	194 / 90	-40 / -40	120 TO 277V	LED12-24V120M	0.14	17	15	0.95	2	2									
25	24	1.04				LED25-24V120M	0.26	31	10	0.95	5	2									
60	24	2.50				LED60-24V120M	0.60	71	10	0.95	5	2									
100	24	4.10				LED100-24V120M	0.98	117	10	0.95	6	2									
<b>12VDC LED SYSTEMS (DIMMING)</b>																					
MAX.	MIN.	MAX.	MIN.	194 / 90	-40 / -40	120 TO 277V	MODEL NUMBER	INPUT CURRENT (A)	INPUT POWER (W)	MAX. THD (%)	MIN. POWER FACTOR	DIM.	WIRING DIAG.								
25	2.5	12	0											0.21-2.08	LED25-12V120M-D	0.27	31	10	0.95	5	1
60	6	12	0	0.50-5.00	LED60-12V120M-D	0.61	74	10	0.95	5	1										
<b>24VDC LED SYSTEMS (DIMMING)</b>																					
MAX.	MIN.	MAX.	MIN.	194 / 90	-40 / -40	120 TO 277V	MODEL NUMBER	INPUT CURRENT (A)	INPUT POWER (W)	MAX. THD (%)	MIN. POWER FACTOR	DIM.	WIRING DIAG.								
25	2.50	24	0											0.11-1.04	LED25-24V120M-D	0.26	31	10	0.95	5	1
60	6	24	0											0.25-2.50	LED60-24V120M-D	0.60	71	10	0.95	5	1
100	10	24	0	0.41-4.10	LED100-24V120M-D	0.98	117	10	0.95	6	1										

# Constant Current LED Drivers

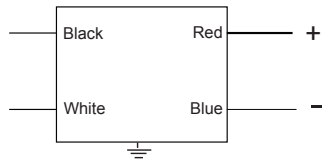
# LED DRIVERS

OUTPUT POWER (W)		OUTPUT VOLTAGE (V)		OUTPUT CURRENT (mA)	AMBIENT TEMP. (°F/°C)		INPUT VOLTAGE	MODEL NUMBER	INPUT CURRENT (A)	INPUT POWER (W)	MAX. THD (%)	MIN. POWER FACTOR	DIM.	WIRING DIAG.
MAX.	MIN.	MAX.	MIN.	CONSTANT	MAX.	MIN.			MAX.	MAX.				
12	6	36	18	350	140 / 60	-22 / -30	120V	LED112-350C120	0.15	16	10	0.99	4	3
12	6	24	12	500				LED112-500C120	0.13	15	20	0.97	4	3
12	6	36	18	350			120 TO 277V	LED112-350C120M	0.15	18	10	0.99	2	3
12	6	18	9	700				LED112-700C120M	0.15	18	10	0.99	2	3
12	3	14	3	1050				LED112-1050C120M	0.15	18	10	0.99	2	3
24	13	36	18	700				LED124-700C120M	0.22	26	10	0.98	3	3
24	12	24	12	1050				LED124-1050C120M	0.31	32	10	0.99	3	3
24	6	21	4	700				LED212-700C120M	0.30	32	10	0.99	3	4
24	12	24	12	500				LED212-500C120M	0.24	30	10	0.99	3	4
<b>CONSTANT CURRENT LED DRIVERS, LOW POWER FACTOR</b>														
5	1	9	3	700	140 / 60	-22 / -30	120 TO 277V	LEDL15-700C120M	0.11	7.6	125	0.50	1	3
5	1	6	3	1050				LEDL15-1050C120M	0.11	7.6	125	0.50	1	3
6.3	3	18	6	350				LEDL15-350C120M	0.12	9.0	200	0.50	1	3
6.5	3	13	6	500				LEDL15-500C120M	0.12	9.2	200	0.50	1	3

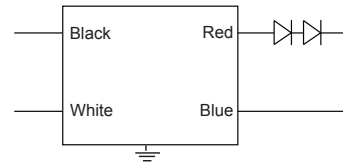
**Figure 1**



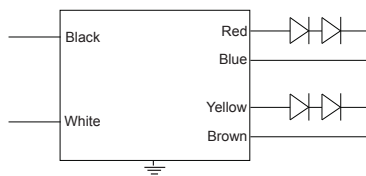
**Figure 2**



**Figure 3**



**Figure 4**



### BALLAST DIMENSIONS

DIM. #	LENGTH	WIDTH	HEIGHT	MOUNTING
1	4.21"	1.41"	1.14"	3.82"
2	6.22"	1.73"	1.22"	5.87"
3	5.00"	2.48"	1.18"	4.45"
4	5.36"	1.34"	1.00"	5.16"
5	9.50"	1.70"	1.14"	8.90"
6	9.50"	2.40"	1.46"	8.90"